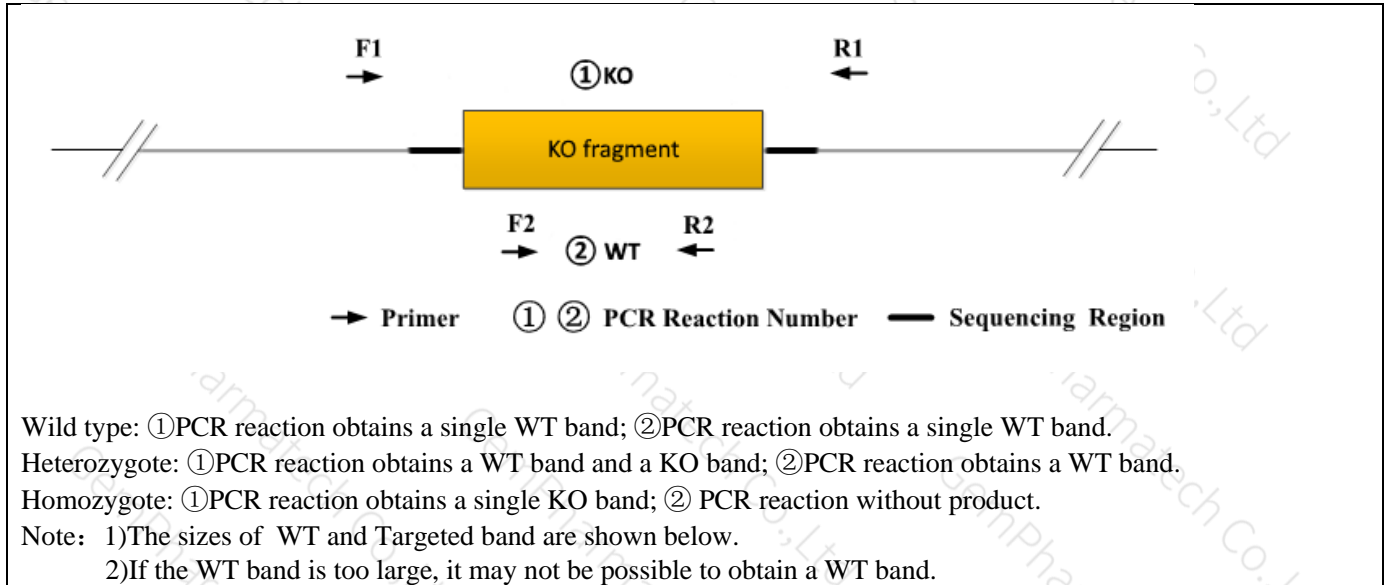


Genotyping Report

Strain ID	T006112	Strain Type	KO(Cas9)	Genetic Background	C57BL/6JGpt
Designer	Zifan Lin	Gene Name	Ccr2		

1. Strategy of Genotyping

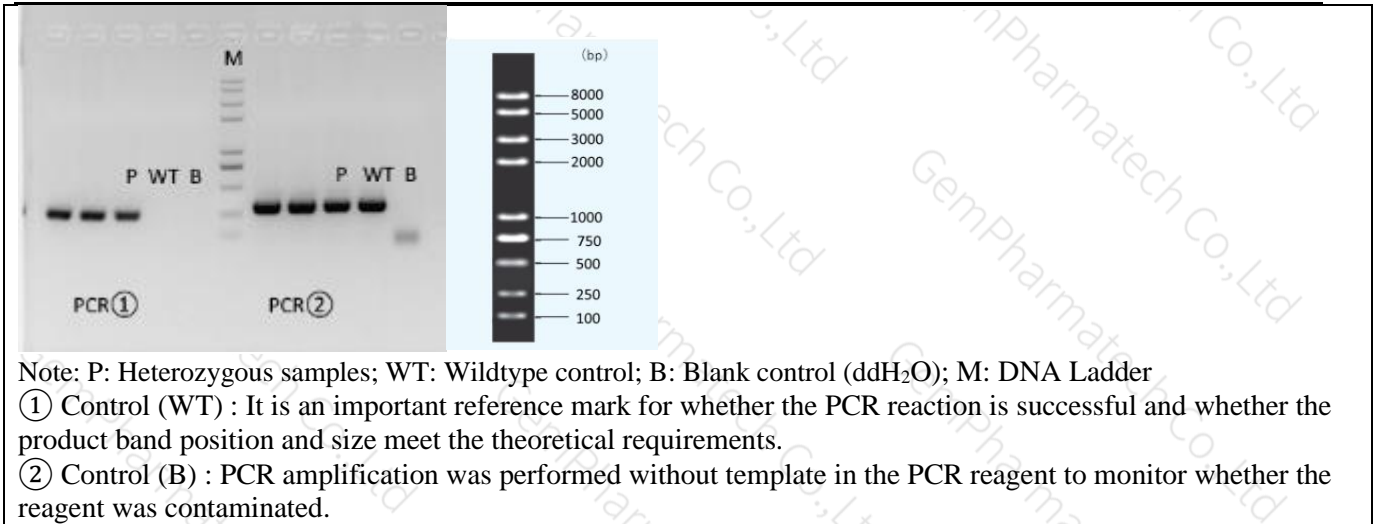


2. Primer Information

PCR No.	Primer No.	Sequence	Band Size
PCR①	T006112-F1	GCAACCTTATCAAAAGTGTGAGTGAGAG	WT:6912bp KO: 255bp
	T006112-R1	AAAGCCTAACCATGCTGCTTTAATGC	
PCR②	T006112-F2	TGGTGAAAGATTGTCCTTTGAGTGAG	WT:306bp KO:0bp
	T006112-R2	GCTATCTGAAGGTGATACTCTCATCCC	

3. Gel Image

gaaataagaagtcagaaagtgagcc-----**6657bp**-----ctagtaatatgcccattagacccc



4. PCR Condition

(Generally recommend to use Vazyme P222; If the sequences contain special structures such as GC% ≥ 60% or GC% ≤ 40%, recommend to use Vazyme P515.)

PCR Reaction Component			
Seg.	Reaction Component		Volume (μl)
1	2 × Rapid Taq Master Mix(Vazyme P222) or 2 × Phanta Max Master Mix (Vazyme P515)		12.5
2	ddH ₂ O		9.5
3	Primer A(10pmol/μl)		1
4	Primer B(10pmol/μl)		1
5	Template(20~80ng/μl)		1
PCR program I priority selection			
Seg.	Temp.	Time	Cycle
1	95℃	5min	20×
2	98℃	30s	
3	65℃*(-0.5℃/cycle)	30s	
4	72℃	45s*	15×
5	98℃	30s	
6	55℃*	30s	
7	72℃	45s*	
8	72℃	5min	
9	10℃	hold	
PCR program II the second choice			
Seg.	Temp.	Time	Cycle
1	95℃	5min	
2	98℃	30s	35×

3	58°C*	30s	
4	72°C	45s*	
5	72°C	5min	
6	10°C	hold	

Note*: Annealing temperature and extension time can be determined according to the actual amplification situation and amplification enzyme efficiency.

Reviewer:Ting Sun

Date:2021-5-11