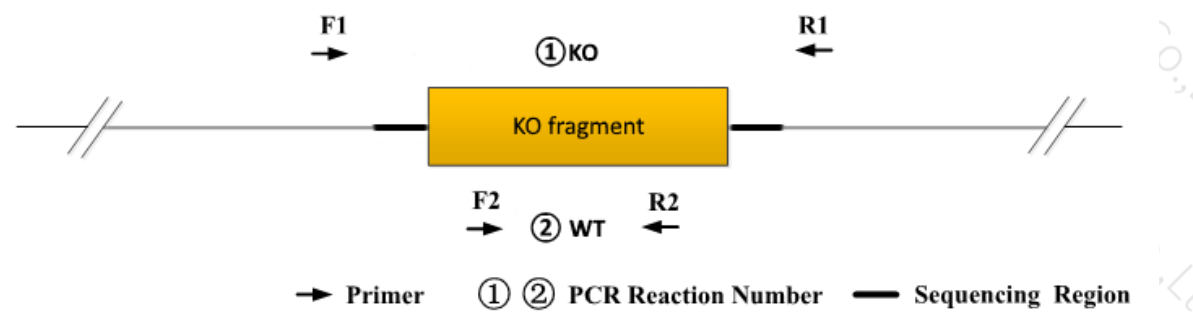


## Genotyping Report

Strain ID	T005565	Strain Type	KO(Cas9)	Genetic Background	C57BL/6JGpt
Designer	Zifan Lin	Gene Name	<i>Il2rb</i>		

### 1. Strategy of Genotyping



Wild type: ①PCR reaction obtains a single WT band; ②PCR reaction obtains a single WT band.  
 Heterozygote: ①PCR reaction obtains a WT band and a KO band; ②PCR reaction obtains a WT band.  
 Homozygote: ①PCR reaction obtains a single KO band; ② PCR reaction without product.  
 Note: 1)The sizes of WT and Targeted band are shown below.  
 2)If the WT band is too large, it may not be possible to obtain a WT band.

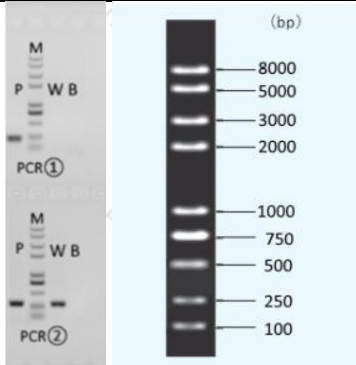
### 2. Primer Information

PCR No.	Primer No.	Sequence	Band Size
PCR①	T005565-F1	ACATGCAGAGGCTGCTGATG	WT: 8077bp Targeted:241bp
	T005565-R1	TGCATTCTGTGATGAATCACTAG	
PCR②	T005565-F2	ACATGCAGAGGCTGCTGATG	WT:273bp Targeted:0bp
	T005565-R2	TCTCCTTCCACCACAGCATCT	

### 3. Gel Image

```

ccatggatagcgcctctgtgtcttcccttg---7908bp+72bp---
AATGGGCTCTGGATTGGGGTTGTGACAGGTGGCTCAGTGGGCAGAGTGCCTGGCACAGGCGTACAAGCAT
GAGTtcagggagctgcagagatccctgcctctgtg
  
```



Note: P: Positive control; WT: Wildtype control; B: Blank control (ddH<sub>2</sub>O); M: DNA Ladder

① Control (WT) : It is an important reference mark for whether the PCR reaction is successful and whether the product band position and size meet the theoretical requirements.

② Control (B) : PCR amplification was performed without template in the PCR reagent to monitor whether the reagent was contaminated.

#### 4. PCR Condition

PCR Reaction Component			
Seg.	reaction component		Volume (μl)
1	2 × Rapid Taq Master Mix (Vazyme P222)		12.5
2	ddH <sub>2</sub> O		9.5
3	Primer A(10pmol/μl)		1
4	Primer B(10pmol/μl)		1
5	Template(≈100ng/μl)		1
PCR program ① priority selection			
Seg.	Temp.	Time	Cycle
1	95℃	5min	20×
2	98℃	30s	
3	65℃* (-0.5℃/cycle)	30s	
4	72℃	45s*	
5	98℃	30s	20×
6	55℃*	30s	
7	72℃	45s*	
8	72℃	5min	
9	10℃	hold	
PCR program ② the second choice			
Seg.	Temp.	Time	Cycle
1	95℃	5min	35×
2	98℃	30s	
3	58℃*	30s	

4	72℃	45s*	
5	72℃	5min	
6	10℃	hold	

Note\*: Annealing temperature and extension time can be determined according to the actual amplification situation and amplification enzyme efficiency.